



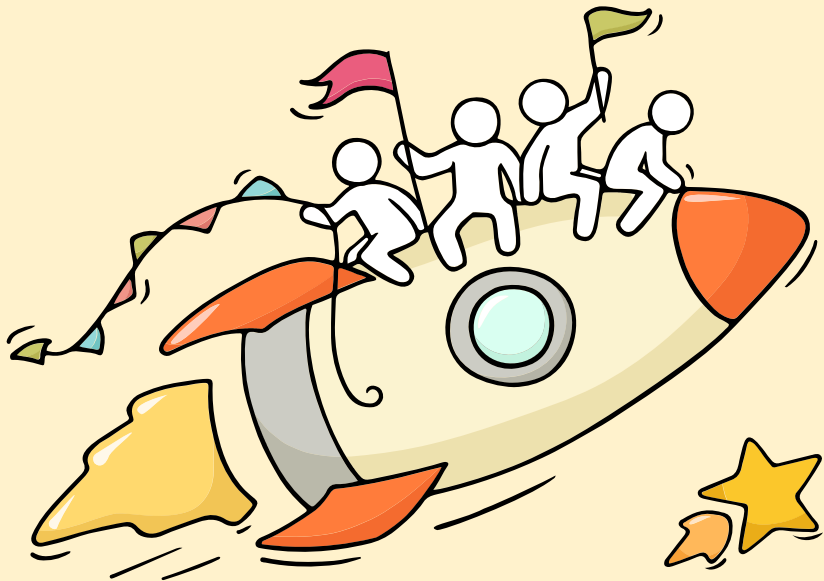
Welcome Back!

Briefing Slides for Release of 2023 N-Level Results



Dear students,

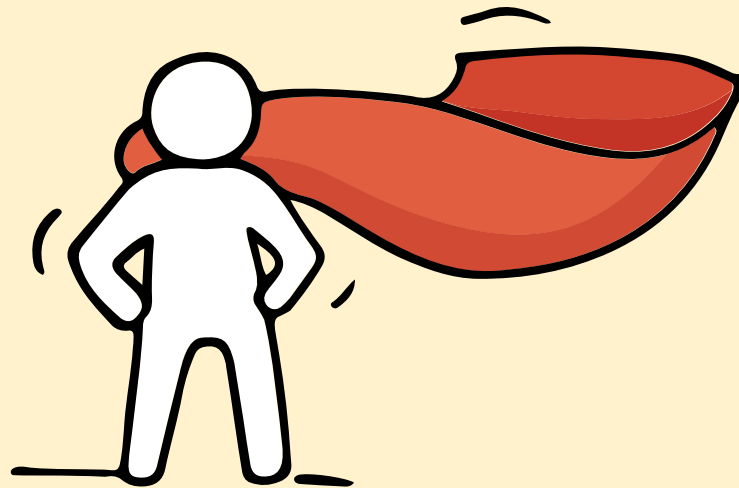
You have worked hard to reach this stage. Let's celebrate your efforts!



Finally, we are going to get our results!



Remember that while **everyone's educational journey is different, we can each have a fulfilling outcome!**



Thinking about Your Next Step?

Consider these questions!

Where do I want to go?

Who am I?



How Do
I Get There?

Resources to help you make informed decisions



MySkillsFuture Student Portal

A one-stop portal that empowers you to embark on a journey of self-discovery and make informed education and career choices.

Use the information and tools to explore various education and career pathways and take charge of your future.

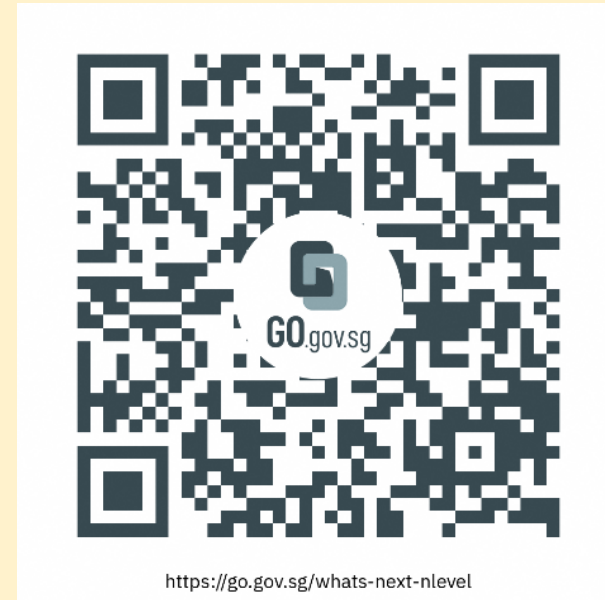
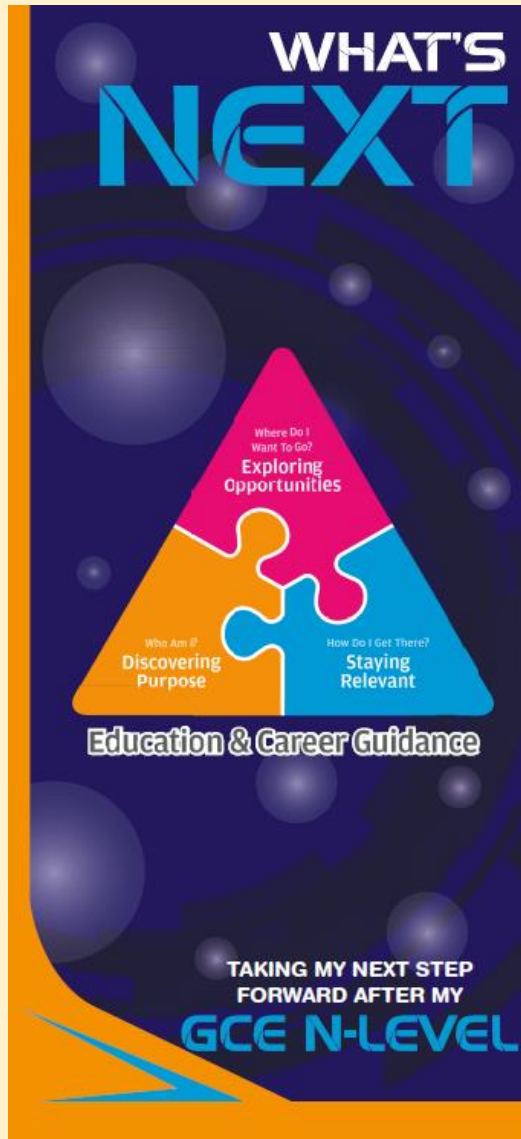
Where can we find more information?



<https://go.gov.sg/mySFsec>



Resources to help you make informed decisions



<https://go.gov.sg/whats-next-nlevel>

Resources to help you make informed decisions

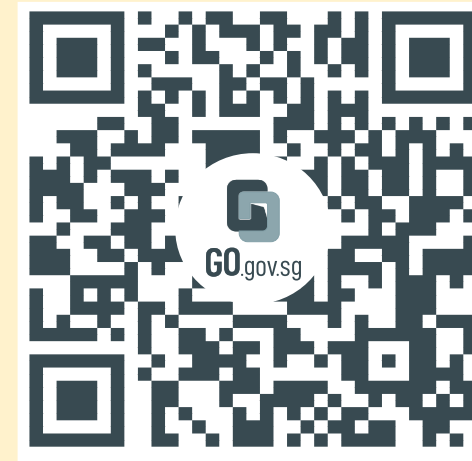
Post-Secondary Education

Learn more about the admissions exercises and programmes



<https://moe.gov.sg/post-secondary/admissions>

Learn more about the post-secondary education institutions



<https://moe.gov.sg/post-secondary/overview>

Resources to help you make informed decisions

Explore different jobs and industries with On My Way (OMW). Find out if your career goal and educational pathway match your interests, values and ambitions. <https://www.nyc.gov.sg/omw/home>



KNOW IT ALL

provides consolidated information about different jobs and industries - key responsibilities, skills, career paths and more!

DAY IN THE LIFE

takes you into the lives of different professionals and give you a glimpse of their jobs and what it entails through the medium of videos.

TASTER PROGRAMMES

are micro-experiences of different job roles that allow you to get a taste of working life and help you decide what to study to achieve your career aspirations!

Concerned about your next steps?

Stop

- Calm yourself down. Take a few deep breaths.

Think

- Think through the different options that are available for you. Keep things in perspective.
- Remember that the N-Level is one part of your life journey and not the destination.

Do

- Approach a trusted adult and seek his/her help. Have a conversation with this person about what would be best for you.
- Make a decision and take action based on your options.

When you receive your results, you may experience a range of emotions.

Managing these emotions well will allow you to stay calm and make rational decisions.

Reaching out for help is a sign of strength, not weakness.

If you have any questions about your options or are not coping well, do reach out to someone you trust and speak with them. It could be a parent/guardian, teacher, ECG Counsellor, School Counsellor or a friend that you can talk to.

*Is there
someone we
can speak
with?*



Support is readily available for you.

Reach out to an ECG Counsellor!

Who can we go to for ECG advice?

Make an appointment to speak with your ECG Counsellor in school.

OR

Make an ECG counselling appointment via the ECG Centre @ MOE (Grange Road) at

<https://go.gov.sg/moe-ecg-centre>



2023 N-Level ECG Counselling Support

1. In school – for Damaians only

- 18 Dec (Mon), 2.00 pm to 4.30pm
- 19 Dec (Tues), 8am to 12pm & 1pm to 4pm

Venue : Student Lounge (beside school hall)



Mr Edwin Khong,
ECG Counsellor

2. Online – for Damaians only

- 20 Dec (Wed) & 21 Dec (Thu), 8am to 12pm & 1pm to 4pm

Please find instructions in the next few slides.



Online ECG Counselling Session for 20 Dec (Wed) & 21 Dec (Thu)




[https://go.gov.sg/dssecgcappointment
booking](https://go.gov.sg/dssecgcappointmentbooking)

Go to

[https://go.gov.sg/dssecgc
appointmentbooking](https://go.gov.sg/dssecgcappointmentbooking)

Things to note

- 
- a. Check your email inbox. ECGC will send you a confirmation email on your booking appointment.
 - b. Have your results slip, Form N and JIE booklet ready during the session.

Keep a lookout for some of these signs in your peers or in yourself

How can we support one another?



D

Deliberately avoiding others

I

Increased irritability, restlessness, agitation, stress and anxiety

S

Sending or posting moody messages on social media

T

Talking about death or dying

R

Reacting differently or gradually losing interest in things they used to like

E

Eating more than usual or having a much reduced appetite

S

Sleep pattern changes with difficulty falling asleep or oversleeping

S

Slowing down of energy levels

If you notice any of these signs in yourself or your friends,
have a chat with your school counsellor or teacher
Or contact SOS 24-hour hotline at **1-767** or **1800-221-4444**

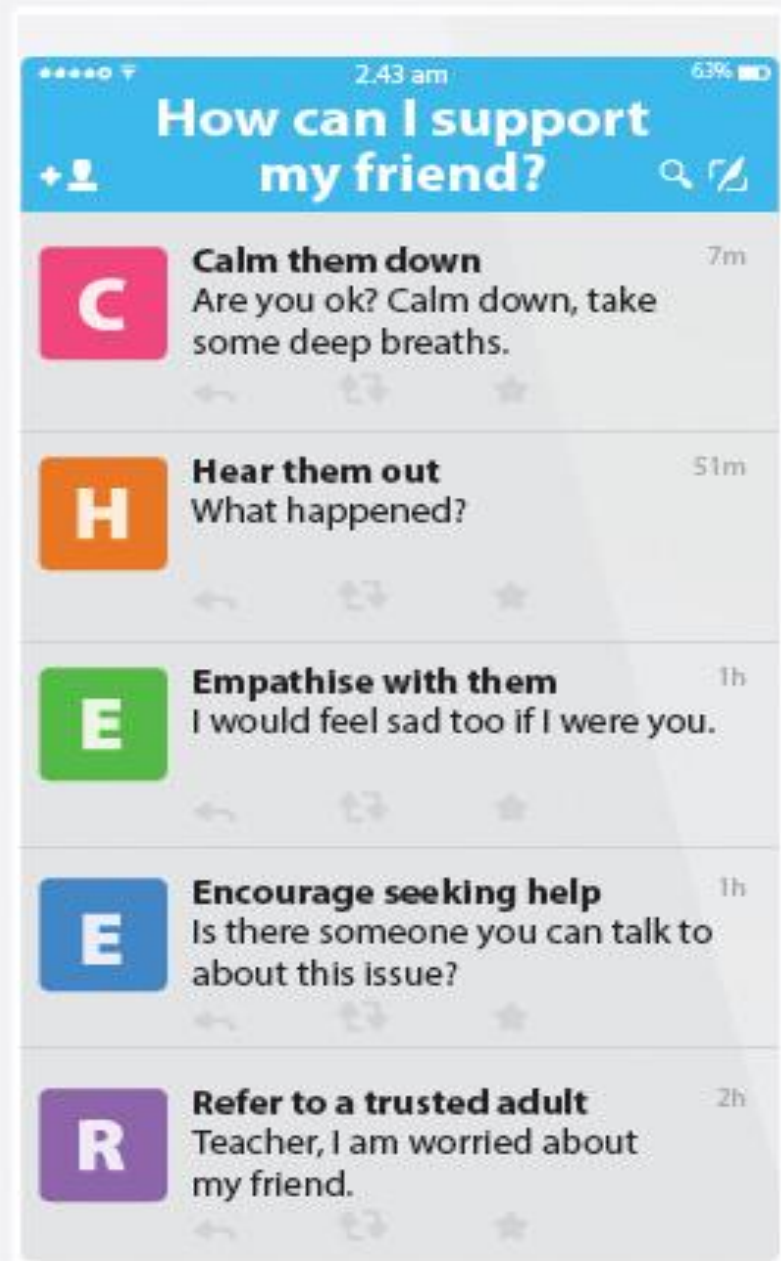


Supporting Your Friend

We may each experience different emotions upon receiving the results. You can share your friends' joy by congratulating them or give words of encouragement to friends who may be disappointed with their results.

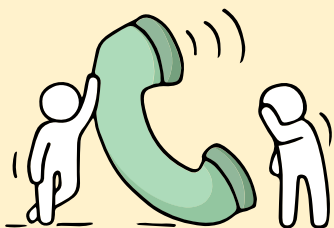


Keep a lookout for your friends in distress. You can support them in the following ways:



Support is readily available for you.

There are other hotlines and chats available if you are more comfortable seeking help using these platforms.



SOS

SOS provides round-the-clock emotional support for those in distress, thinking of suicide or affected by suicide. This service is manned by trained volunteers.

Call: **1767**
(24-hour helpline)

Whatsapp: **9151 1767**
(24-hour Care Text)

There are also alternative avenues for emotional support for those who prefer to write. Response time for this service is within 48 hours, excluding weekends and public holidays.

Email: pat@sos.org.sg

TOUCHline

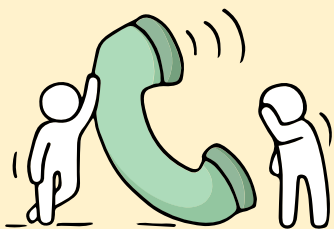
TOUCHline is a helpline to provide youths with emotional support and practical advice.

Call: **1800-377 2252**

Monday- Friday (Excluding Public Holidays): 9am – 6pm

Support is readily available for you.

There are other hotlines and chats available if you are more comfortable seeking help using these platforms.



Community Health Assessment Team (CHAT)

If you experience prolonged difficulties, CHAT provides personalised and confidential mental health checks and face-to-face consultation for youth aged 16 to 30. To speak with a youth support worker, you can:

Visit: **CHAT Hub at *SCAPE, #05-05**

Call: **6493 6500/ 6501**

Email: **CHAT@mentalhealth.sg**

eC2

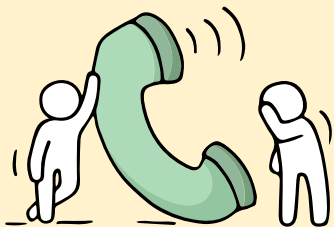
eC2 is an e-Counselling Centre where you can talk to a trained counsellor about the issues you are facing, right where you are.

Youths may chat with a counsellor online at: www.ec2.sg

Monday – Friday (Excluding Public Holidays): 10am – 12pm & 2pm – 5pm

Support is readily available for you.

There are other hotlines and chats available if you are more comfortable seeking help using these platforms.



Carey

Carey is an online platform by Care Corner that provides free mental health check-ins with mental health professionals. Explore self-help tools and learn how to cope better or support your friends too.

Find out more:

<https://carey.carecorner.org.sg/>



mindline.sg

mindline.sg is an online platform that provides tools, tips and resources to help you manage your health and well-being. Explore and find out how you can improve your mental well-being and support your friends too.

Find out more:

www.mindline.sg

Support is readily available for you.

There are other hotlines and chats available if you are more comfortable seeking help using these platforms. Scan the QR code below for a helpful resource.



SOS provides round-the-clock emotional support for those in distress, thinking of suicide or affected by suicide.

Call: **1767**
(24-hour helpline)

Whatsapp: **9151 1767**
(24-hour Care Text)

TOUCHline is a helpline to provide youths with emotional support and practical advice.

Call: **1800-377 2252**

*Monday- Friday (Excluding Public Holidays):
9am – 6pm*

Community Health Assessment Team

(CHAT) provides personalised and confidential mental health checks and consultation for youths. To speak with a youth support worker, you can:

Visit: **CHAT Hub at *SCAPE, #05-05**

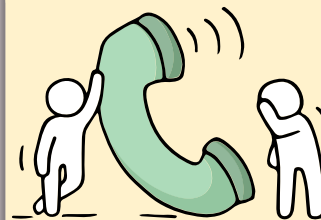
Call: **6493 6500/ 6501**

Email: **CHAT@mentalhealth.sg**

Carey is an online platform by Care Corner that provides free mental health check-ins with mental health professionals. Find out more at:
<https://carey.carecorner.org.sg/>

mindline.sg is an online platform that provides tools, tips and resources to help you manage your health and well-being. Find out more at:

www.mindline.sg



eC2 is an e-Counselling Centre where you can talk to a trained counsellor about the issues you are facing, right where you are.

Chat with a counsellor at:

www.ec2.sg

*Monday – Friday (Excluding Public Holidays):
10am – 12pm & 2pm – 5pm*

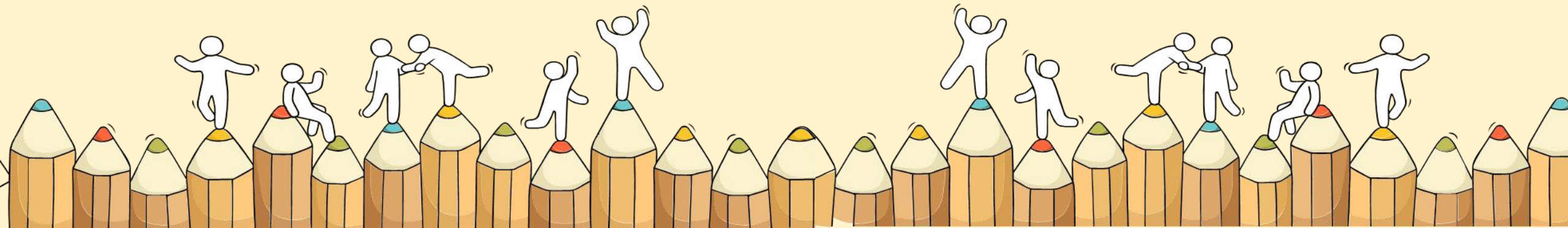


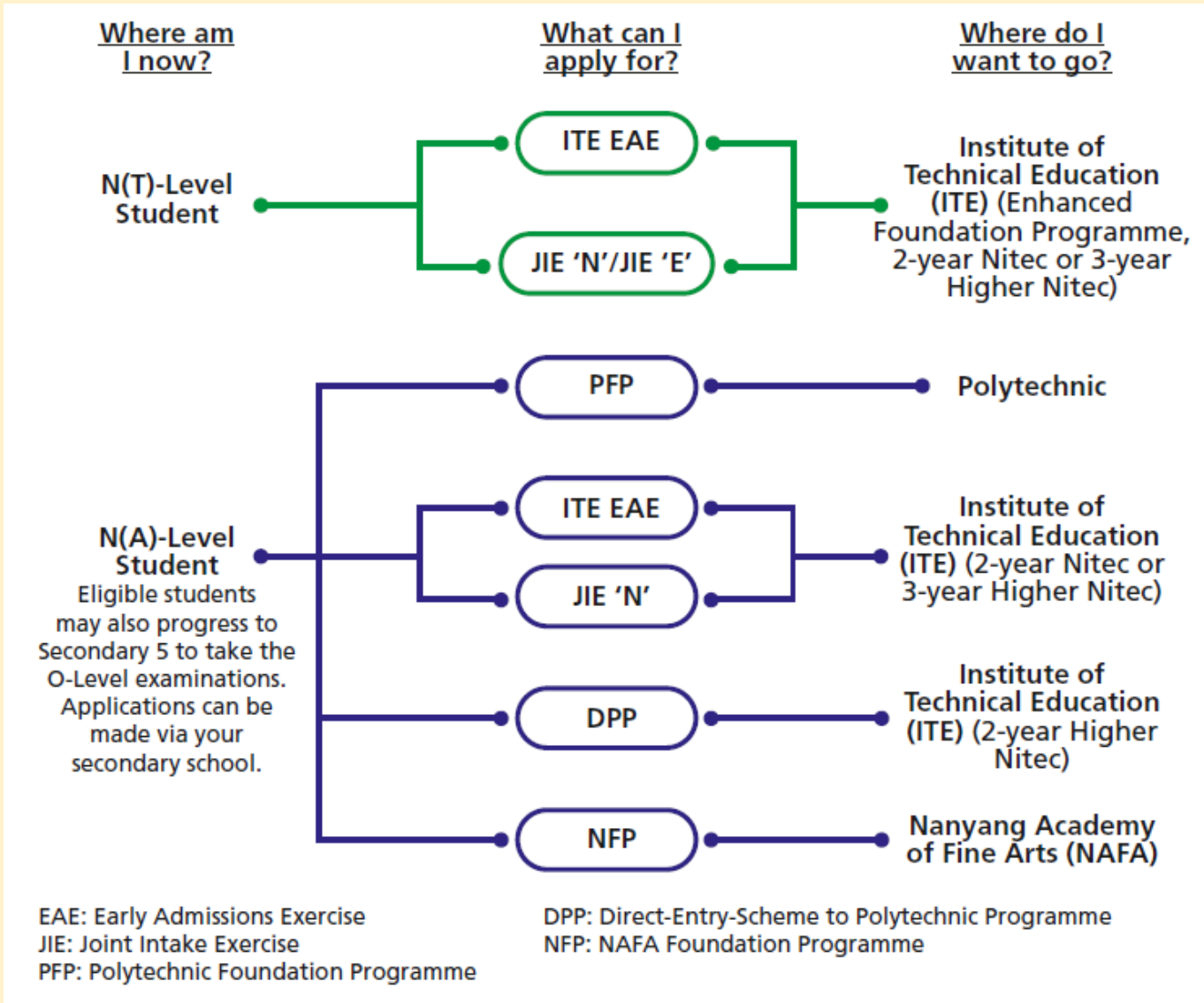
**The N-Level
examination is not
the destination.**

**It is part of your
education journey.**

Admissions Exercises

Things to note





<https://www.moe.gov.sg/post-secondary/admissions>

For more information on applying to these courses, you can visit

<https://ite.edu.sg/admissions/traineeship>

For the list of 3-year Higher Nitec courses, please visit

<https://www.ite.edu.sg/courses/full-time-courses/nitec-and-3-year-higher-nitec>

Selected Nitec and Higher Nitec courses are available in traineeship mode.

Admissions Exercises Application Timeline

(N-Level Results)

Dec

- ● JIE 'N'
- JIE 'E'
- DPP
- NFP

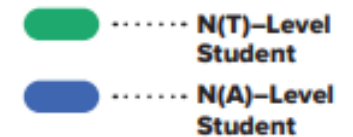
(Start of 2-year *NITEC* and
3-year *Higher Nitec*)

Jan

- PFP
- DPP
(2nd window of applications)

(Start of Polytechnic
and 2-year *Higher Nitec*
Term)

Apr



Details of Admission Exercises



JIE 'N'/JIE 'E' – Joint Intake Exercise

The JIE 'N' is for 2-year *Nitec* or 3-year *Higher Nitec* courses offered by ITE.

The JIE 'E' is for GCE N(T) students to apply for the 3-year *Nitec* course with Enhanced *Nitec* Foundation Programme.

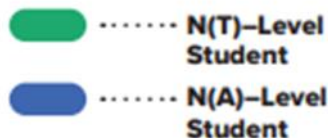


go.gov.sg/applyjie

New 3-Year *Higher Nitec*

- Streamlining the current *Nitec* and *Higher Nitec* curricula, this new option will allow students to attain a *Higher Nitec* qualification directly, in only three years instead of the current four years.
- More information can be found at <https://www.ite.edu.sg/courses/full-time-courses/nitec-and-3-year-higher-nitec>

ITE will offer **25** 3-year *Higher Nitec* courses in **Academic Year (AY) 2024**



Details of Admission Exercises – ITE EAE offers



ITE EAE – ITE Early Admissions Exercise

ITE EAE is an aptitude-based admissions exercise that allows students to apply and receive conditional offers for admission to ITE based on their aptitude and interest, prior to receiving their final GCE N-Level examination results. It allows students to demonstrate their aptitudes and interests apart from academic grades, thus allowing a wider range of talents to be recognised.

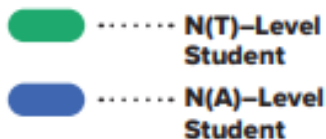


go.gov.sg/iteeae

- Students with confirmed ITE EAE offers are expected to honour their EAE offers.
- They are not allowed to apply for Nitec courses or 3-year Higher Nitec courses at the Joint Intake Exercise (JIE).
- However, they can still apply for the Direct-Entry-Scheme to Polytechnic Programme (DPP) after the release of the GCE 'N' Level results, or Polytechnic Foundation Programme (PFP) after the release of the GCE 'O' Level results, if they qualify.

Check with FTs

Please check with FTs if you have met the minimum entry requirements (MERs) and successfully retained your confirm ITE EAE offer. Also to check course and college posted to.



Details of Admission Exercises - DPP

JIE 'H' exercise

DPP – Direct-Entry-Scheme to Polytechnic Programme

DPP allows Secondary 4N(A) students to be admitted directly into selected 2-year *Higher Nitec* programmes at ITE without having to sit for the O-Level examinations or undergo a *Nitec* programme. DPP students who successfully complete their *Higher Nitec* courses at ITE and attain the required qualifying Grade Point Average (GPA) scores are guaranteed a place in a polytechnic diploma course mapped to their *Higher Nitec* course.



go.gov.sg/applydpp

- **Criteria for DPP:**
 - Obtained an ELMAB3 aggregate scores of 19 points or less (excluding CCA bonus points); and
 - Meet subject-specific entry requirements for each course, as stated in **2024 JIE booklet from Pg 47-48** or refer to <https://www.ite.edu.sg/courses/full-time-courses/higher-nitec-for-dpp>
- Successful applicants will be required to attend a 10-week preparatory course prior to commencing their Higher Nitec courses. More information can be found at <https://www.ite.edu.sg/admissions/full-time-courses/higher-nitec-dpp>
- For the mapping of DPP courses to Diploma courses, please refer to **2024 JIE booklet Pg 46.**
- Instead of progressing to Sec 5N(A), students should consider enrolling directly into two-year Higher Nitec courses at ITE through the Direct-Entry-Scheme to Polytechnic Programme (DPP).

Details of Admission Exercises - PFP



PFP – Polytechnic Foundation Programme

PFP is a one-year programme that offers a practice-oriented curriculum taught by polytechnic lecturers to better prepare polytechnic-bound Secondary 4 N(A) students for entry into selected polytechnic diploma courses. PFP students are given provisional places in diploma programmes, subject to them passing all modules in the one-year programme.



go.gov.sg/pfp

Take note!

- **Criteria for PFP:**
 - **Obtained an ELMAB3 aggregate scores of 12 points or less** (excluding CCA bonus points); and
 - Meet the subject-specific entry requirements stated in https://pfp.polytechnic.edu.sg/PFP/pfp_eligibility.html
- Following the release of the GCE O-Level results in January 2024, PFP-eligible students may submit their applications online via the PFP portal. More information can be found at <https://pfp.polytechnic.edu.sg/PFP/index.html>
- **Students who are only interested in applying for the PFP** should first progress to Sec 5N(A), even if they meet the PFP eligibility criteria based on their GCE N(A) Level results in December 2023. They may then apply for the PFP upon release of the GCE O-Level results in January 2024. If their application is successful, they will withdraw from Sec 5N(A) by the end of January 2024. **All PFP-bound students are required to attend Sec 5N(A) classes in their secondary schools up till the last Friday of January 2024, i.e. 26 January 2024.**

Calculation of ELMAB3 – for those taking SBB subjects & awaiting results in Jan 2024

Students who sat for subjects in the GCE O-Level Examination (and have not received their results) may **use their school-based O-Level preliminary examination results** to compute their ELMAB3 for eligibility.

Conversion of school-based O-Level preliminary examination grades to N(A)-Level subject grades before calculating ELMAB3:

School O-Level Prelim	N(A)-Level Grade
A1, A2, B3	1
B4, C5, C6	2
D7	3
E8	4
9	5

Calculation of Aggregate Points for eligibility in ITE (JIE 'N') courses

Computation of ITE aggregate points **for 2-year Nitec & 3-year Higher Nitec courses:**

Refer to page 15 of JIE booklet for computation and bonus points available

N(A)-Level Grade	N(T)-Level Grade	ITE Aggregate Point for JIE 'N'
1, 2, 3	A	1
4	B	2
5	C	3
6 / U	D	4
-	E / U	5

Quick overview of various options available for 4NT and 4NA

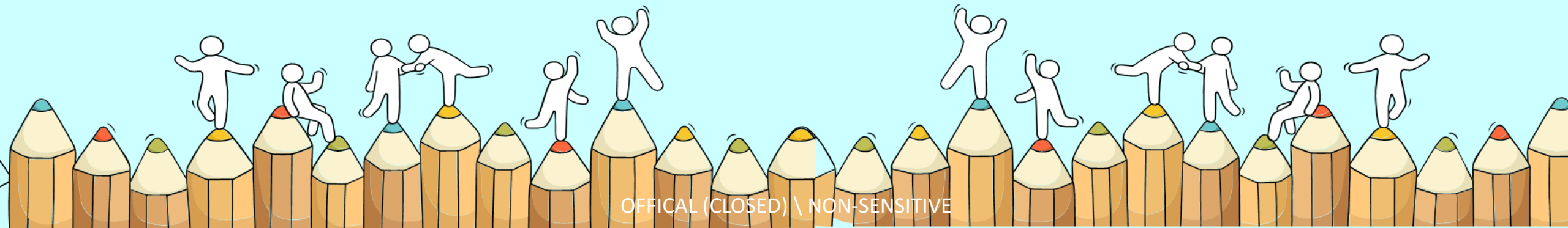
	2-year & 3-year Higher Nitec	DPP	PFP	Sec 5NA	NFP (NAFA)
Applicable to	4NT and 4NA	4NA			
If ITE-EAE is confirmed	Cannot participate	No impact. Can still apply or progress if eligible for these options			
Aggregate Type	Best 4*	ELMAB3			
Gross aggregate required for eligibility	Nil	≤ 19	≤ 12	≤ 19	≤ 15
Grade requirements for specific subjects	Yes for most courses. Please refer to pgs 8-12 of JIE booklet 2023.	Yes. Please refer to pg 47-48 of JIE booklet 2023.	Yes. Please refer to PFP website	Yes, pass all subjects used in ELMAB3	Yes. Please refer to NAFA website
Number of choices	12	12	5	N.A.	1

* Based on best 4 GCE 'N' Level subjects, including pre-requisite subjects and bonus points where applicable

Summary of Educational Pathways for Sec 4 N(A) Students

Criteria	Pathway 1	Pathway 2	Pathway 3
ELMAB3 ≤ 19	<p>Direct-Entry-Scheme to Polytechnic Programme (DPP)</p> <p><i>Meet the subject-specific entry requirements</i></p>	<p>2-year Nitec or 3-year Higher Nitec</p>	<p>Promoted to Sec 5N(A)</p> <p>(Make appointment to meet VP and YH with parents for 5NA admission by 21 Dec, 2 pm)</p>
ELMAB3 ≤ 12	<p>Polytechnic Foundation Programme (PFP)</p> <p><i>Meet the subject-specific entry requirements</i></p>	<p>Direct-Entry-Scheme to Polytechnic Programme (DPP)</p> <p><i>Meet the subject-specific entry requirements</i></p>	

Deadlines to note



Information For Students on Key Dates for Jan 2024 intake

1. All N(A)* /N(T) school leavers are encouraged to put in an application during the **1st Phase (Main Phase)** between **18 Dec 2023 (2.30pm) to 21 Dec 2023 (5pm)**. Application results for the 1st Phase will be released on **29 Dec 2023 at 9am**.
2. If you wish to appeal, please accept the course offered **before** applying in the **2nd Phase (Late Application/Appeal Phase)** between **29 Dec 2023 to 3 Jan 2024**. The application results for the 2nd Phase will be known on **10 Jan 2024 at 9am**.
3. Unsuccessful applicants can appeal under the **3rd Phase (Final Top-up Phase)** between **10 Jan to 18 Jan 2024 and 24 Jan to 7 Feb 2024** for courses with vacancies. The application results for the 3rd Phase will be known between **15 Jan to 24 Jan 2024** and **24 Jan to 14 Feb 2024**.

*N(A) students progressing to ITE

For further enquiries, N-Level school leavers can contact
ITE Hotline: 1800-2222-111

Key dates for **JIE 'N'** for 2-Year *Nitec* and 3-Year *Higher Nitec* courses

1st Phase (Main Phase)

ACTIVITY	DATE	REMARKS
Application Period	18 Dec 2023 (2.30pm) to 21 Dec 2023 (5pm)	Refer to page 21 - 22 of JIE booklet Apply through the Internet at https://www.ite.edu.sg with NRIC / FIN and Date of Birth. You may also apply using SingPass.
Release of Course Interview Details	Fri 22 Dec 2023 (from 2pm)	Refer to page 28 of JIE booklet
Interview for Courses with Interview Requirement	The interviews are scheduled on: Tues 26 Dec 2023 or Wed 27 Dec 2023.	Refer to page 28 - 29 of JIE booklet
Release of Application Results	29 Dec 2023 (from 9am)	Check results at https://istudent.ite.edu.sg with web ID and password
Acceptance of Offer (or to reject offer)	29 Dec 2023 to 3 Jan 2024	Refer to page 30 - 39 of JIE booklet Accept course offer at https://istudent.ite.edu.sg with web ID and password
Reporting to Colleges & commencement of Training	8 Jan 2024	Refer to page 40 of JIE booklet

Key dates for **JIE 'N'** for 2-Year *Nitec* and 3-Year *Higher Nitec* courses

2nd Phase (Late Application/Appeal Phase)

ACTIVITY	DATE	REMARKS
APPEAL APPLICATION	29 Dec 2023 to 3 Jan 2024	Refer to page 41 - 42 of JIE booklet Apply through the Internet at https://istudent.ite.edu.sg with NRIC / FIN and Date of Birth. You may also apply using SingPass.
Release of Course Interview Details Under <u>Appeal Phase</u>	5 Jan 2024 (from 9am)	Refer to page 42 of JIE booklet Check results at https://istudent.ite.edu.sg with web ID and password
Interview for Courses with Interview Requirement Under <u>Appeal Phase</u>	8 Jan 2024	
Release of <u>Appeal</u> Results	10 Jan 2024 (from 9am)	Refer to page 42 of JIE booklet Check results at https://istudent.ite.edu.sg with web ID and password
Acceptance of Offer (or to reject offer)	10 Jan 2024 to 12 Jan 2024	Accept course offer at https://istudent.ite.edu.sg with web ID and password

Key dates for **JIE 'N'** for 2-Year *Nitec* and 3-Year *Higher Nitec* courses

3rd Phase (Final Top-up Phase)

ACTIVITY	DATE	REMARKS
FINAL TOP-UP APPLICATION	1 st Top-up Phase Application - 10 Jan to 18 Jan 2024 2 nd Top-up Phase Application - 24 Jan to 7 Feb 2024	Apply through the Internet at https://istudent.ite.edu.sg with NRIC / FIN and Date of Birth. You may also apply using SingPass.
Release of Results	1 st Top-up Phase - 15 Jan to 24 Jan 2024 2 nd Top-up Phase - 24 Jan to 14 Feb 2024	Check results at https://istudent.ite.edu.sg with web ID and password
Acceptance of Course Offer Period (or to reject offer)	1 st Top-up Phase - 15 Jan to 24 Jan 2024 2 nd Top-up Phase - 24 Jan to 14 Feb 2024	Accept course offer at https://istudent.ite.edu.sg with web ID and password

Key dates for JIE 'H' for 2-yr Higher Nitec courses under DPP

ACTIVITY	DATE	REMARKS
Application Period	18 Dec 2023 (2.30pm) to 21 Dec 2023 (5pm)	Refer to page 51 - 56 of JIE booklet Apply through the Internet at https://www.ite.edu.sg with NRIC / FIN and Date of Birth. You may also apply using SingPass.
Release of Application Results	22 Dec 2023 (from 2pm)	Check results at https://istudent.ite.edu.sg with web ID and password
Acceptance of Offer (or to reject offer)	22 Dec 2023 - 27 Dec 2023	Refer to pages 57 - 66 of JIE booklet
APPEAL	22 Dec 2023 - 27 Dec 2023	Refer to page 68 of JIE booklet
Release of <u>Appeal</u> Results	29 Dec 2023 (from 9am)	Check results at https://istudent.ite.edu.sg with web ID and password
Reporting to Colleges & commencement of Training	8 Jan 2024	Refer to page 67 of JIE booklet

Key Pointers for Students on ITE's Joint Intake Exercise (JIE) for Admission to Nitec Courses

ALL N(T) students and N(A) students (who are not progressing to 5N(A) or repeating 4N(A)) are eligible for JIE.

Keen competition for Nitec and Higher Nitec courses, so use all 12 choices wisely!

Participation in Main Phase is key to secure a place in ITE!

If you are keen in the work & learn option, you may consider applying for the ITE Traineeship programme. Do apply in the Main Phase to avoid missing a place in ITE!

If you are unsuccessful in EAE, make sure you apply in Main Phase to avoid missing a place!

If you have received an additional letter, then you are eligible for the Enhanced Foundation Programme.

If you are eligible for EFP, make sure you apply for the 2-year Nitec and 3-year Higher Nitec first before applying for EFP!




The EFP helps to build the necessary literacy and numeracy foundations that will enable you to successfully complete your Nitec course!

If you are counter-offered a course, accept it first before appealing for another course you may be more interested in!

Online Application for

2-Year Nitec and 3-Year
Higher Nitec Courses

3-Year Nitec/4-year Higher Nitec
Course with EFP
(for N(T) courses with 0, 1 pass)

1. Go to https://www.ite.edu.sg .	
2. Click  icon.	
3. Under JIE 'N' , click  icon to link to the application website	Under JIE 'E' , click  icon to link to the application website
4. At the application website: a) Enter NRIC / FIN and Date of Birth to start application. You may also apply using SingPass. b) Upon completion of application, applicants will receive their web ID and password.	

Checking of Posting Results/Accept Course Offer

2-Year Nitec and 3-Year
Higher Nitec Courses

3-Year Nitec/4-year Higher Nitec
Course with EFP
(for N(T) courses with 0, 1 pass)

1. Go to <https://istudent.ite.edu.sg>.
2. Enter **web ID** and password.
3. Click '**Self-Service**' followed by '**Student Admission**' followed by '**View Application Results**' to view the application results and to accept course offer.

The above steps applies to all phases (refer to [Slide 9](#) for dates).
For more details, please refer to ITE Admission Booklet.

**Laptops and printer are
available in the School Library
for online application.**

**From 9am to 3pm
Tuesday, 19 Dec to Thursday,
21 Dec 2023 till 3pm.**

**Please scan the QR code to
register your slots.**



Additional Information For Students


Should you require further advice or assistance in your applications or future plans, please contact your teachers and ECG Counsellor.

For further inquiries, you may refer to the following hotlines and links for more information and advice on further education:

Institute of Technical Education (ITE)	
ITE Hotline (for ITE admissions and courses)	1800 2222 111 training@ite.edu.sg
Education and Career Guidance (ECG)	
ECG Centre @ MOE	<u>6831 1420</u> MOE ECG@moe.gov.sg e-Appointment: https://go.gov.sg/moe-ecg-centre

Additional Information For Students

The information listed in the table below will help you to make an informed decision on which choice of courses you could consider applying at ITE.

S/N	Information	Attachment/Link
1	ITE Factsheet 2023	 JIEN2023 Factsheet
2	ITE Course Booklet 2024	https://for.edu.sg/ite-course-booklet-2024
3	ITE Traineeship Courses	https://www.ite.edu.sg/courses/traineeship-courses .
4	Information on Progression Opportunities (From <i>Nitec</i> Courses to <i>Higher Nitec</i> and Technical Diploma Courses)	https://www.ite.edu.sg/admissions/full-time-courses/nitec/progression-opportunities
5	Information on Graduate Employment Survey	https://www.ite.edu.sg/admissions/graduate-employment-survey

FAQ

A Sec 4N(A) student has accepted his ITE EAE offer, but has qualified for the Direct-Entry-Scheme to Polytechnic Programme (DPP) or Polytechnic Foundation Programme (PFP).

Can he apply for the DPP or PFP and retain his ITE EAE place?

- Sec 4N(A) students who have a confirmed ITE EAE offer for a *Nitec/Higher Nitec* course and have qualified for the DPP or PFP after the release of the GCE N- or O-Level examination results **may apply for the DPP or PFP**.
- Students who receive a **DPP** offer will be required to decide between the DPP or ITE EAE offer. Students who do not decide by the stipulated deadline will be deemed to have accepted their DPP offer and their ITE EAE offer will be released.
- As applications to the **PFP** open in January, students with confirmed ITE EAE offers may progress to ITE first before applying for PFP when applications open. Students who subsequently receive a PFP offer may withdraw from their ITE EAE course.

WISHING
YOU
ALL THE
BEST. ♥